

By EFTCG

**NORDIC**  
S T E E L  
**NORDIC**



ISO 9001  
BUREAU VERITAS  
Certification



# NORDIC STEEL BUILDINGS Profile



# CONTENTS

I. Company Background	02
I. Scope of Business & Procedure Flow Chart	10
II. NORDIC Steel Advantages	14
III. NORDIC Steel Typical Projects and Clients	19
IV. NORDIC Steel Social Activities	29





## I. COMPANY BACKGROUND

### NORDIC STEEL BUILDINGS CO., LTD.

*The NORDIC Group started its Asia operations in HCM city, Vietnam in 1994 and was one of the first companies to bring the **Pre-Engineered Buildings** technology to the East Asia region*

- **Founders/ Board of Directors** : Sami Kteily (Executive Chairman)  
Adib Kouteili (Co-Founder & Director)
- **Registered capital** : US\$ **15,000,000**
- **Revenue** : **2019**: over **US\$ 100,000,000**
- **Staff & Workers** : over 1,400  
*(with in-house professional engineering employees: 100)*
- **Production capacity** : over 100,000 MT per annum
- **Banks** : HSBC, ANZ, UOB, SHINHAN, BOCOM, BIDV, VIETINBANK, VIB, MB
- **Total facilities** : over **US\$ 75,000,000**
- **Auditor** : Deloitte
- **Tax Consultant** : Deloitte
- **Memberships** : Amcham; Eurocham; Cancham; Vietnam Chamber of Commerce and Industry (VCCI); Kocham; SBG  
US Green Building Council (USGBC); AISC

## VISSION - MISSION

### OUR VISION

For NORDIC Steel to be recognized as the bench mark in the steel building industry. This will be accomplished through its **product perfection, engineering excellence** and the **best customer service** in the industry.

### OUR MISSION

**To bring** the pre-engineered building technology to where it is most needed in the world, and help others “build a better life” through industrialization.

**To build** high capacity, efficient & cost effective steel factories for speedy delivery and for benefiting from “economies of large scale“.

**To design** and fabricate safe and technologically advanced buildings.

**To offer** customers versatility in design and fabrication to meet their exact building requirements.

**To offer** customer services second to none in the industry.





## Head office:

Address: Unit 701, 7th Fl., VietJet Plaza,  
60A Truong Son St., Tan Binh Dist., HCMC, Vietnam

Tel: (+84) 28 38 475 475

Fax: (+84) 28 38 476 476

Email: [Sales@NORDICsteel.com.vn](mailto:Sales@NORDICsteel.com.vn);

[Marketing@NORDICsteel.com](mailto:Marketing@NORDICsteel.com)

Website: [m.vn\\_www.NORDICsteel.com](http://m.vn_www.NORDICsteel.com)


## Factories:

**Vung Tau Factories:** Dong Xuyen IP, Vung Tau City, Ba Ria Vung Tau Province

**Myanmar Factory:** Thilawa Special Economic Zone – TSEZ Yangon, Myanmar

**India Factory:** Pithampur, Madhya Pradesh State, India

## Representative offices:

OFFICE	CODE	PHONE	FAX
 HCM Office	(84) (28)	6299 0069	6299 0067
 HA NOI	(84) (24)	3 9 747 747	3 9 746 746
 DA NANG	(84) (236)	3 92 82 82	6 25 27 27
 BANGKOK	(66 2)	258-4639 - 41	258-4643
 JAKARTA	(62) (21)	520 3025 / 520 3001	
 MANILA	(63) (2)	813 7684 / 813 7680	813 7684
 PHNOM PENH	(855) (23)	678 8679	



## FACTORIES

Total fabrication capacity in Region: **120,000 MT** per year



### Myanmar Factory

Thilawa Special Economic Zone, Yangon



### India Factory

Pithampur, Madhya Pradesh State

### 6 factories in Vietnam

Dong Xuyen Industrial Park, Rach Dua Ward, Vung Tau





## II. SCOPE OF BUSINESS & PROCEDURE FLOW CHART

Design, Fabrication, Supply and Erection

### Factory



### Aircraft Hangar (up to 128M)



### Office Building



### Warehouse



### Supermarket



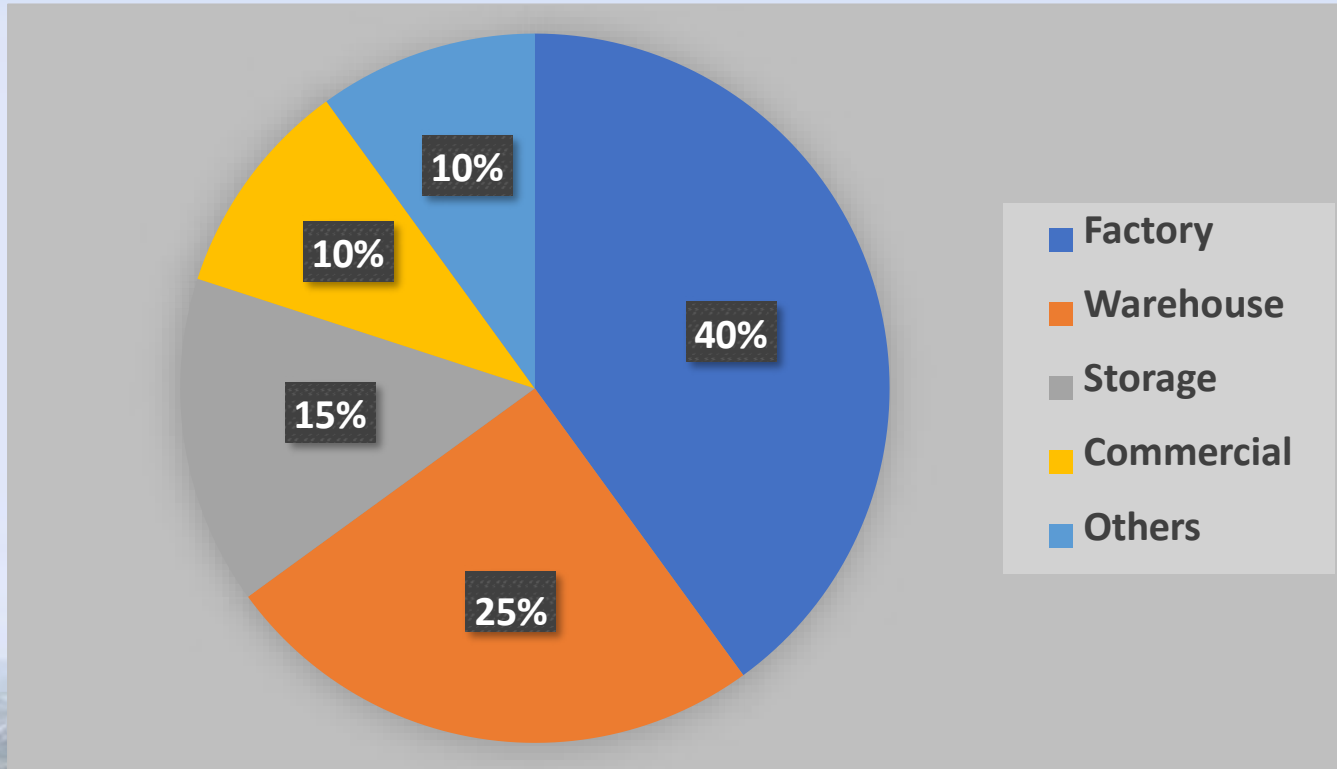
### Shipyards



### Sport Stadium

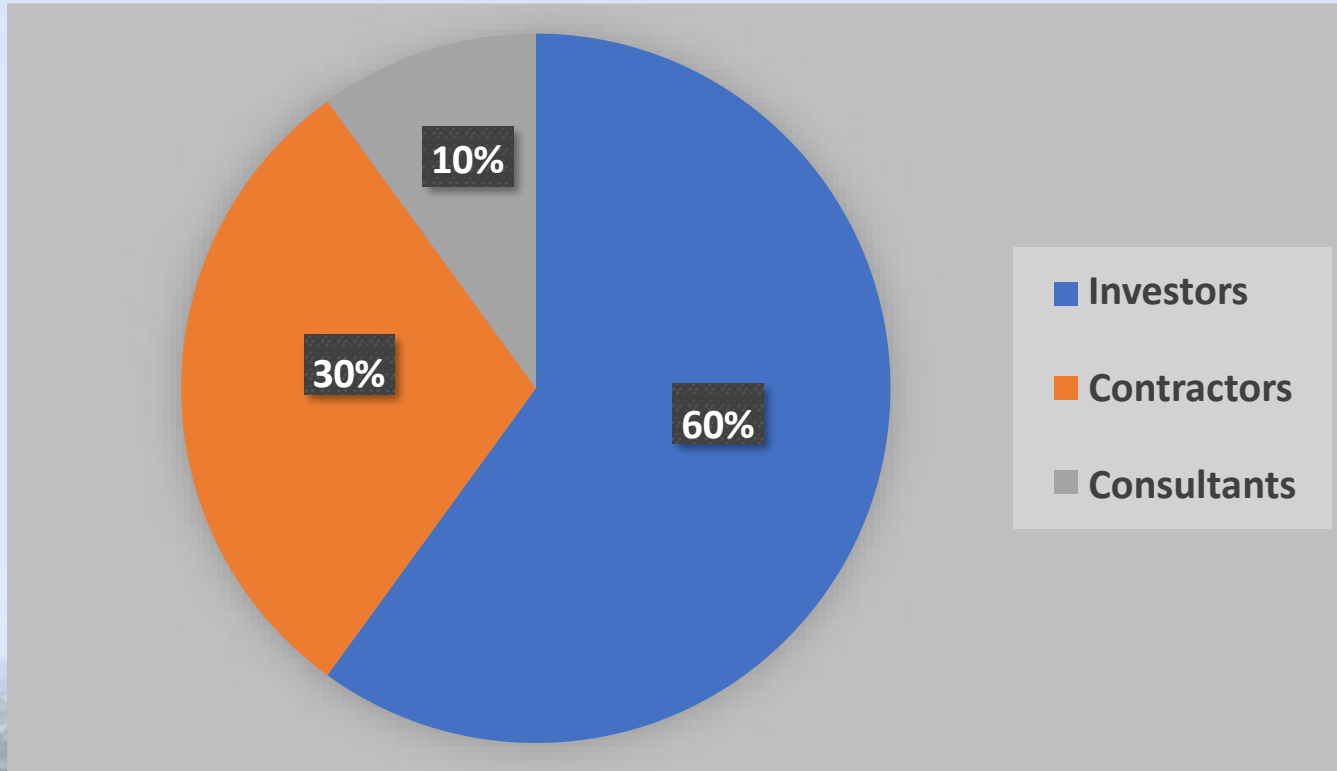


## Proportion of Industrial Building Types





## Proportion of Investors/ Contractors/ Consultants



## PROCEDURE FLOW CHART





## III. NORDIC STEEL ADVANTAGES

**With more than 25 years of experience in Steel Buildings, NORDIC Steel is the leader in the Design, Fabrication, Supply, and Erection of Pre-Engineered Steel Buildings. Key advantages include:**

- Over **6,000 buildings** supplied to **both local and global customers**
  - Buildings delivered to Vietnam and many foreign countries in South-East and Middle-East Asia, Africa and Australia.
  - NORDIC has become a regional leader in the design, fabrication, supply, and erection of Pre-Engineered Steel Buildings.
- **6 modern factories in Vietnam, 1 factory in Myanmar** with yearly capacity of **over 100,000 Metric Tons** of complete pre-engineered buildings – the **largest in the region.**
- **ISO 9001:2008 , OHSAS 18001: 2007**
- **ERP System** serves the needs of Finance, Manufacturing, Project Management, Supply Chain Management, and other department in the Organization, and also manage Customer Relationship Management.
- **STRUMIS V10** - Steel Fabrication Management Information Software
- **Tekla Structure Software** is always updated to the newest version



## Outstanding Design Ability

- Innovative design and engineering capabilities of the highest degree.
- Compliance with the **latest International Design Codes**

American Welding Society - **AWS D 1.1**  
 Welding Structural Steel of thickness more than 3.2mm



**IBC 2015  
Building Code**



**AWS 2015  
Welding Code**



**AISC 2016  
Design Code**



**MBMA 2012**



**AISI 2013  
Cold Formed Code**





By EFTCG

# NORDIC S T E E L



# Outstanding Design Ability

## Professional and popular softwares

**AutoCAD** 2010

**SAP 2000**  
INTEGRATED SOLUTION FOR STRUCTURAL ANALYSIS & DESIGN

**Detail**  
**TEKLA Structures 16.0**

**Design**

**Estimate**

**PRONEST WITH STRUMIS**  
REDUCE WASTE AND MAXIMIZE MATERIAL EFFICIENCY

**Steel Fabrication Software**

**Hypertherm**  
SHAPING POSSIBILITY™

**STRUMIS**  
BRINGING STRUCTURE TO STEEL





## Superior Products



- **Versatile product range** (Built up, Laced, Heavy, Composite column, Castellated beams, Double crane beam, Open-Web-Curved Rafter, Open-Web purlins, Built-up Curved Rafter).
- **Superior quality** materials and state-of-the-art machinery.
- **Free Shot Blasting (Always) SA2.0** for ALL steel frame for **every project**.
- **Epoxy paint** for steel frame.
- Steel Plates from **Japan, Korea and China**.
- **Full Automatic Production, Fast delivery** and **short erection duration**.
- **3-year** warranty for water-leak, **3-year** material warranty, and **10-year** structural warranty.





# Green Building

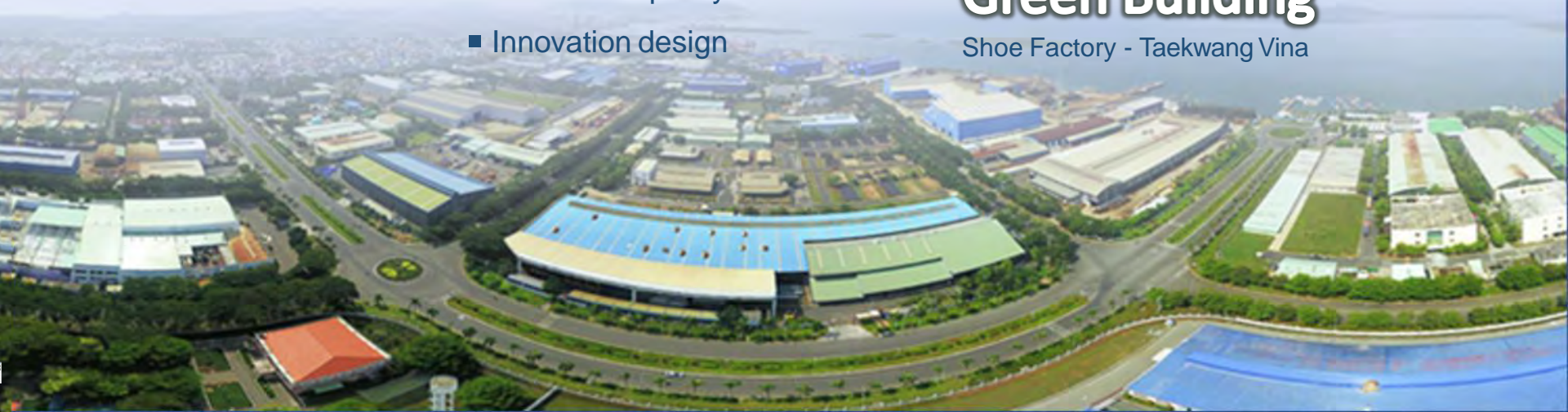
**Green Building Support:** NORDIC Steel Buildings Co., Ltd. is a member of U.S Green Building Council. Five of the eight categories outlined by LEED® that contribute to sustainability are applicable to P.E.B building systems:

- Sustainable sites
- Energy and atmosphere
- Materials and resources
- Indoor environmental quality
- Innovation design



## Green Building

Shoe Factory - Taekwang Vina



## IV. NORDIC STEEL TYPICAL

Customer Name	End-user / End-client	End-user's nationality	Country	Area (m <sup>2</sup> ) Weight (Mt)
Shimizu Corporation	Nippon Sheet Glass Plant	Japan	Vietnam	2,000 Mt
Lever Vietnam Jv Corporation	Unilever Vietnam Warehouse	Netherlands	Vietnam	1,900 Mt
Lloyd Insulations Ltd.	Reliance Industries Ltd.	India	India	1,200 Mt
Bsrn Steel	BSRM Steel Vietnam	Bangladesh	Bangladesh	9,000 Mt
Aker Yards Vietnam	Aker Yards Vietnam	Norway	Vietnam	1,300 Mt
Doosan Heavy Industries	Doosan Heavy Industrial Factory	Korea	Vietnam	11,300 Mt





## IV. NORDIC STEEL TYPICAL

Customer Name	End-user / End-client	End-user's nationality	Country	Area (m <sup>2</sup> ) Weight (Mt)
Saigon Shipyard	Saigon Shipyard	Vietnam	Singapore	3,000 Mt
Toda Corporation	Olympus Vietnam Factory	Japan	Vietnam	3,000 Mt
Vietnam Waste Solutions	Vietnam Waste Solution	U.S	USA	1,320 Mt
United Steel Construction Vietnam	SunSteel Corporation Factory	Taiwan	Taiwan	1,321 Mt
GE Vietnam	GE Vietnam Factory	U.S	USA	2,200 Mt
Vietstar Company	Vietstar Company	Vietnam	Vietnam	90,000 Sqm
Vietnam Moc Bai	Vietnam Moc Bai Shoes Factory	Korea	Vietnam	120,000 Sqm
NORDIC (Indochina) Ltd	Asia Metal Co.	Myanmar	Myanmar	40,000 Sqm
Ngon Coffee	Ngon Coffee Factory	India	Vietnam	3,000 Mt
Vietcombank	Vietcombank Tower	Vietnam	Vietnam	1,200 Mt
Gerico France SA	CP Vietnam Factory	Thailand	Vietnam	1,400 Mt



## IV. NORDIC STEEL TYPICAL

Customer Name	End-user / End-client	End-user's nationality	Country	Area (m <sup>2</sup> ) Weight (Mt)
TH Milk Food	TH Milk Food	Vietnam	Vietnam	70,000 Sqm
Doosan Heavy Industries	Mong Duong II Power Plant	Korea	Vietnam	7,000 Mt
NORDIC (Indochina) Ltd	FCB Warehouse	Thailand	Thailand	120,000 Sqm
Sailun Vietnam	Sailun Vietnam Factory	China	Vietnam	120,000 Sqm
PT Rekayasa Industri Engineering & Construction	PT. Petro Jordan Abadi-Phosporic Acid	Indonesia	Indonesia	1,600 Mt
NORDIC Manila Office	14-floor WorkSpace Building	Philippines	Philippines	2,000 Mt
Vinata International Jv	Tomoku Vietnam Factory	Japan	Vietnam	1,650 Mt
PT. Unilever Oleochemical	Big Leap and Dove Production Plant	Netherland	Indonesia	4,000 Mt
Gain Lucky Vietnam	Gain Lucky Vietnam Factory	China	Vietnam	270,000 Sqm
Serveone	LG Electronics Vietnam Factory	Korea	Vietnam	2,000 Mt
Descon Construction	Anheuser-Busch InBev Brewery Plant	U.S	Vietnam	1,200 Mt
Thien nam Sunrise Textiles	Thien nam Sunrise Textiles Factory	Vietnam	Vietnam	80,000 Sqm





## IV. NORDIC STEEL TYPICAL

Customer Name	End-user / End-client	End-user's nationality	Country	Area (m <sup>2</sup> ) Weight (Mt)
Thai Boon Roong Cement Co.	Thai Boon Roong Cement Factory	Cambodia	Cambodia	90,000 Sqm
CP Rice (Cambodia) Co.	CP Rice Mill Factory	Thailand	Cambodia	1,200 Mt
Can Sports Vietnam Co.	Can Sports Vietnam Factory	Taiwan	Vietnam	90,000 Sqm
All Wells International Co.	All Wells International Factory	China	Vietnam	2,500 Mt
Taekwang Vina Industrial JSC.	Taekwang Vina Industrial JSC.	Korea	Vietnam	2,200 Mt
Sato Kogyo Cambodia	Aeon Mall Cambodia Car Parking	Japan	Cambodia	2,500 Mt
Hazama Ando Corporation	YKK Vietnam Factory	Japan	Vietnam	1,500 Mt
Trans-Asia Construction Development Corporation	Lufthansa MRO Hangar	Germany	Philippines	1,100 Mt
NORDIC Indochina	TPIPL Pcl	Thailand	Thailand	1,200 Mt
Agrimeco Jsc	VietinBank Building	Vietnam	Vietnam	1,800 Mt
Sato Kogyo Cambodia	Minebea Cambodia Factory	Japan	Cambodia	3,500 Mt
PT.PP Taisei Indonesia Construction	Krakatau Osaka Steel Mill	Japan	Indonesia	1,800 Mt



## IV. NORDIC STEEL TYPICAL

Customer Name	End-user / End-client	End-user's nationality	Country	Area (m <sup>2</sup> ) Weight (Mt)
Transasia Construction Development Corporation	Transasia Construction Development Corporation	Philippines	Philippines	50,000 Sqm
Elite Long Thanh Co.	Elite Long Thanh Factory	Singapore	Vietnam	2,600 Mt
Chanh Duong Paper Corporation	Chanh Duong Paper Mill	China	Vietnam	2,000 Mt
Shinwha Construction	Samho Vietnam Factory	Korea	Vietnam	80,000 Sqm
JT International Asia Manufacturing Corp.	JT International Asia Manufacturing Corp.	Japan	Philippines	5,000 Mt
Kenda Vietnam	Kenda Vietnam Factory	Taiwan	Vietnam	100,000 Sqm
Kajima Vietnam Co.	Nitori Furniture Factory	Japan	Vietnam	80,000 Sqm
IPM Construction & Development Corporation	Purefoods-Hormel Factory	Philippines	Philippines	4,200 Sqm
San Miguel Foods Inc.	San Miguel Foods Factory	Philippines	Philippines	3,000 Mt
Samsung Engineering Vietnam Co.	Samsung Electronics HCM CE Complex Factory	Korea	Vietnam	2,500 Mt
Viglacera Vietnam	Viglacera Vietnam	Vietnam	Vietnam	1,100 Mt
PT. Greenfields Indonesia	PT. Greenfields Indonesia	Singapore	Indonesia	100,000 Sqm



## IV. NORDIC STEEL TYPICAL

Customer Name	End-user / End-client	End-user's nationality	Country	Area (m <sup>2</sup> ) Weight (Mt)
Nawarat Cambodia	CEL II	Cambodia	Cambodia	3,000 Mt
Aboitiz Construction International	Aboitiz Construction International	Philippines	Philippines	1,500 Mt
Hicon Investment	Animal Feed Manufacturing Guyomarc'h (Neovia Feedmill)	France	Vietnam	1,700 Mt
Vin Group	VinFast Automobile Assembling Plant	Vietnam	Vietnam	11,000 Mt
Thanh Phu Plastic Co.	Thanh Phu Plastic Factory	Vietnam	Vietnam	50,000 Sqm
Thuan Viet Construction	Tanifood Factory	Vietnam	Vietnam	1,200 Mt
Asia Cargo	Asia Cargo	Philippines	Philippines	30,000 Sqm
PT.Sentral Grain Terminal (FKS Group)	PT.Sentral Grain Terminal (FKS Group)	Indonesia	Indonesia	8,000 Mt
Three Touch Engineering	W H Nine Co.,Ltd. Global Inter Co.,Ltd.	Thailand	Thailand	1,700 Mt
PT.Rekadaya ElektriKA	PT.Rekadaya ElektriKA (Tanjung Awar Awar Coal Power Plant)	Indonesia	Indonesia	1,200 Mt
San Miguel Foods Inc.	San Miguel Foods Inc.	Philippines	Philippines	7,000 Mt
CCT Constructor Corporation	CCT Constructor Corporation	Philippines	Philippines	32,000 Sqm

## IV. NORDIC STEEL TYPICAL

Customer Name	End-user / End-client	End-user's nationality	Country	Area (m <sup>2</sup> ) Weight (Mt)
Great Kingdom Furniture Co.	Great Kingdom Furniture Factory	Taiwan	Vietnam	14,000 Mt
Chi Hung Corporation	Chi Hung Factory	Taiwan	Vietnam	1,200 Mt
Western Automobile Assembly Pte. Ltd	Western Automobile Assembly Plant	Sri Lanka	Sri Lanka	40,000 Sqm
PT. Wijaya Karya Konstruksi & Industri (Wikon)	PT. Wijaya Karya Konstruksi & Industri (Wikon)	Indonesia	Indonesia	50,000 Sqm
PT. Diamond Cold Storage (Sukanda Djaya)	PT. Diamond Cold Storage (Sukanda Djaya)	Indonesia	Indonesia	1,200 Mt
Vin Group	VinSmart Research & Manufacture Jsc	Vietnam	Vietnam	2,000 Mt
Three Touch Engineering Co., Ltd	Three Touch Engineering Co., Ltd	Thailand	Thailand	35,000 Sqm
Pt. Bungasari Flour Mills	Pt. Bungasari Flour Mills	Indonesia	Indonesia	1,200 Mt







## JAPANESE CUSTOMERS



By EFTCG

# NORDIC



## KEY CUSTOMERS

